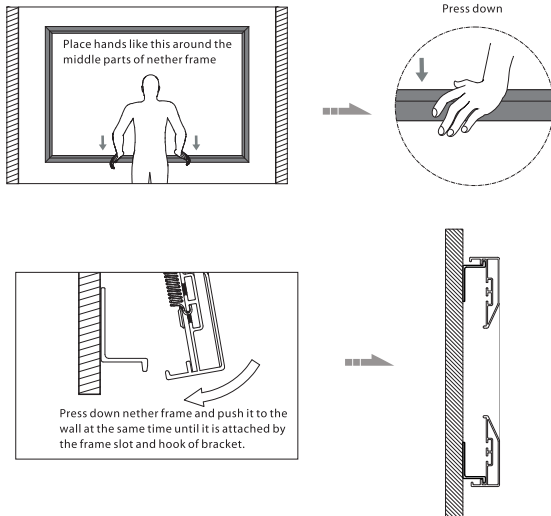
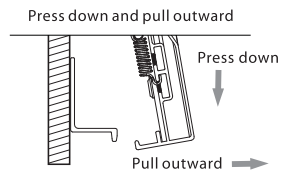


- Make sure upper and nether mounting brackets are fixed firm. Hang the screen onto upper mounting bracket and make adjustment until upper bracket is at the middle of screen. Press down the nether long frame with hands and also push it to the wall until it is attached to nether mounting bracket. Please check below:



- If need to uninstall screen, by following the same way as above, place hands on the middle of nether frames, press frame down and pull it outward until it is unattached from nether mounting bracket. Lift it to uninstall from upper mounting bracket. Please check below:



Grandview®

Grandview®

Maintenance:

In order to maintain good performance of screen, please cover the screen with cloth if it is not used for a long term to prevent dust and dirt from screen. If there are apparent varais or dirt on screen material, please use soft brush or cloth to clean it.

Clean the screen material:

Rub gently according to grain of velvet frame with warm water mixed with soft detergent. (Please be noted that it should be gently rubbed instead of scrubbing hard). Please prevent from hitting the frame in case of damage of velvet. By finishing cleaning, let frames dry itself.

Please do not use any dissolvent, chemical agent or any tool with strong friction for clean, which would cause permanent damage to the screen.



User Manual for Large Flat Series
Prestige-S1 Frame Screen

GRANDVIEW CRYSTAL SCREEN(CANADA) CO.,.LTD.

Add: #11-3751 North Fraser Way, Marine Way Business
Centre, Burnaby, BC, Canada V5J 5G4
Tel: +1-604-412-9777/ Fax: +1-604-412-9796
Web: www.grandviewscreen.com

GRANDVIEW CRYSTAL SCREEN CO.,.LTD.

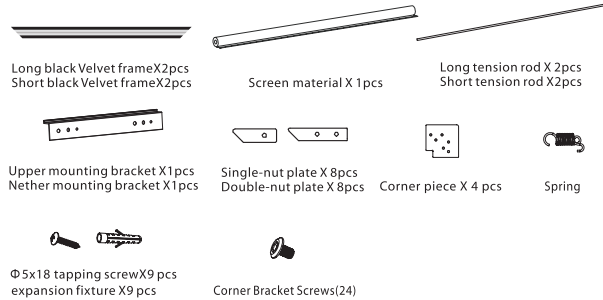
Add: No.43 South International Trade Avenue,
Hualong Town, Panyu, Guangzhou,
GuangDong, China
Tel: +86-20-84899499/ Fax: +86-20-84805299
Web: www.grandviewscreen.com

Dear Customer :

Thanks for your purchasing Grandview product of Large Flat Series Fixed Frame Screen. Please go through the user manual before use. Please keep the user manual well for future reference.

Preparation for installation

Parts:



Tools for installation:

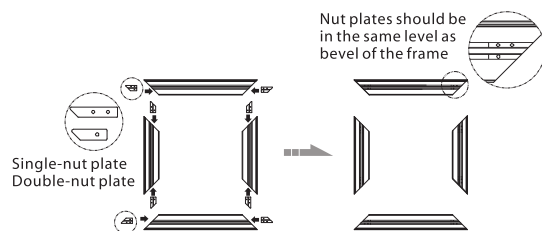


- Please prepare for suitable tools such as gradienter, tape, marker, etc.
- Please make sure precise installation distance and proper installation position for upper and nether mounting brackets.
- Use the proper screws for installation according to the site (use tapping screws for wooden wall and tapping screws with expansion fixture for concrete wall).

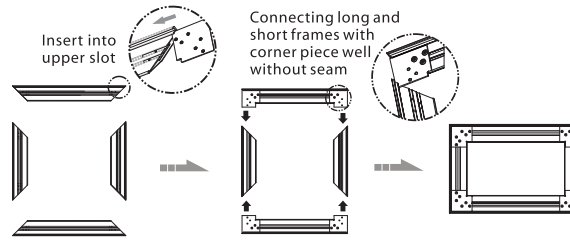
Instruction for installation

Assembly of frames:

- Put the long and short frames on clean floor to form a rectangle shape. Insert the single and double nut plates into two slots in the middle of frames until the nut plates are in the same level as bevel of the frame. Please see below:

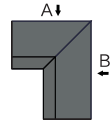


- Insert the corner piece into the upper slot of long frame and array all the holes with the holes of nut plate one by one. Screw them a little bit until it is well enough to connect to upper slot of short frame. Screw them tightly when the frames are connected well and there is no seam seen. Please check below:

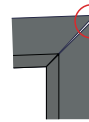


Note: after assembly of frames, please pat slightly position A and B, please check below. If there is seam appearing, please loosen screws on corner piece for adjustment until it is seamless before tight the screws again.

Proper joint

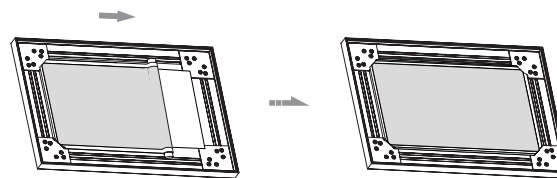


Improper joint

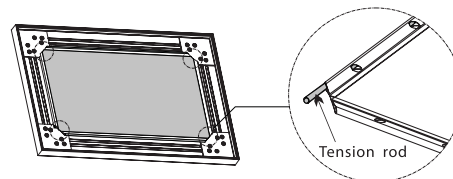


Installation of screen material:

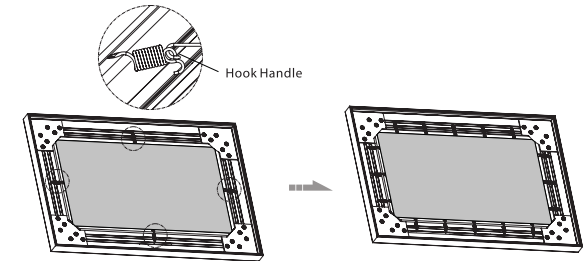
- Lay the connected frames as indicated below, and stretch carefully the screen material according to the following direction. Please see below:



- Lay the screen material flat and insert the tension rod from the edge of screen material. Please see below:



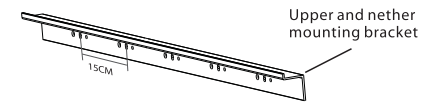
- Use the bigger hook of spring to hitch tension rod from the hole of screen material one by one. Use hook handle to drag the small hook of spring to hitch the slot of frame to tension the screen material. Please start to hitch the frame from the middle position to two sides (left and right) for balance of tension. Please see below:



Note: If the screen material is not flat or has wrinkle, please adjust the springs.

Installation of screen:

- The length of mounting bracket is as half as long frame. Several groups of installation holes are available on mounting bracket and it is 15 cm between each group of holes. The dimension of holes are Φ5, Φ6, Φ8. The mounting bracket should be positioned at the middle of screen, or it is adjustable according to installation environment.



- Get the installation distance by using the formula of "overall product height minus 96mm". Then screw tight the upper and nether mounting brackets onto the wall and make sure it is level. Please check below:

